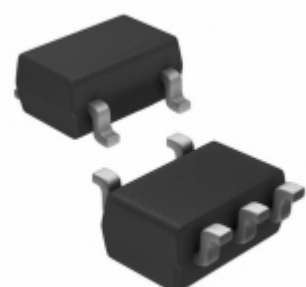


## S-1335M28-M5T1U3



**SII** SII Semiconductor Corporation

**Part Number:** [S-1335M28-M5T1U3](#)  
**Manufacturer:** [SII Semiconductor Corporation](#)  
**Description:** IC REG LINEAR 2.8V 150MA SOT23-5  
**Data sheet:** [PDF S-1335 Series](#)

**RoHS Status:** Lead free / RoHS Compliant  
**Ship From:** Hong Kong  
**Shipment Way:** DHL/Fedex/TNT/UPS/EMS

Images are for reference only.  
 See Product Specifications for product details.  
**Buy S-1335M28-M5T1U3 with confidence from Components-Store.com, 1 Year Warranty**

[Request For Quotation](#)

### PRODUCT PARAMETER

<b>Part Number</b>	<a href="#">S-1335M28-M5T1U3</a>
<b>Manufacturer</b>	<a href="#">SII Semiconductor Corporation</a>
<b>Description</b>	IC REG LINEAR 2.8V 150MA SOT23-5
<b>Lead Free Status / RoHS Status</b>	Lead free / RoHS Compliant
<b>Quantity Available</b>	173500 pcs
<b>Product Photo</b>	<a href="#">S-1335M28-M5T1U3.jpg</a>
<b>Category</b>	<a href="#">Integrated Circuits (ICs)</a>
<b>Voltage Dropout (Max)</b>	0.103V @ 100mA
<b>Voltage - Output (Min/Fixed)</b>	2.8V
<b>Voltage - Output (Max)</b>	-
<b>Voltage - Input (Max)</b>	5.5V
<b>Supplier Device Package</b>	SOT-23-5
<b>Series</b>	S-1335
<b>Protection Features</b>	Overcurrent, Soft-Start
<b>Packaging</b>	Cut Tape (CT)
<b>Package / Case</b>	SC-74A, SOT-753
<b>PSRR</b>	80dB ~ 65dB (1kHz ~ 10kHz)
<b>Output Type</b>	Fixed
<b>Output Configuration</b>	Positive
<b>Other Names</b>	1662-3126-1
<b>Operating Temperature</b>	-40°C ~ 85°C (TA)
<b>Number of Regulators</b>	1
<b>Mounting Type</b>	Surface Mount
<b>Moisture Sensitivity Level (MSL)</b>	1 (Unlimited)
<b>Lead Free Status / RoHS Status</b>	Lead free / RoHS Compliant
<b>Detailed Description</b>	Linear Voltage Regulator IC 1 Output 150mA SOT-23-5
<b>Current - Supply (Max)</b>	54µA
<b>Current - Quiescent (Iq)</b>	1µA
<b>Current - Output</b>	150mA
<b>Control Features</b>	Enable

Components-Store.com is a Reliable Stocking Distributor of Electronic Components. We specialize in all SII Semiconductor Corporation series electronic components. We have 173500 pieces of SII Semiconductor Corporation S-1335M28-M5T1U3 in stock available now. Request a quote from electronics components distributor at Components-Store.com, our sales team will contact you within 24 hours.

RFQ Email: [info@Components-Store.com](mailto:info@Components-Store.com)

### RELATED PRODUCTS

	<b>Part#:</b> <a href="#">S-1335M31-M5T1U3</a> <b>Description:</b> IC REG LINEAR 3.1V 150MA SOT23-5	<b>Manufacturers:</b> <a href="#">SII Semiconductor Corporation</a> <b>In Stock:</b> 187017	<a href="#">RFQ</a>
	<b>Part#:</b> <a href="#">S-1335M23-M5T1U3</a> <b>Description:</b> IC REG LINEAR 2.3V 150MA SOT23-5	<b>Manufacturers:</b> <a href="#">SII Semiconductor Corporation</a> <b>In Stock:</b> 195574	<a href="#">RFQ</a>
	<b>Part#:</b> <a href="#">S-1335M30-M5T1U3</a> <b>Description:</b> IC REG LINEAR 3V 150MA SOT23-5	<b>Manufacturers:</b> <a href="#">SII Semiconductor Corporation</a> <b>In Stock:</b> 164214	<a href="#">RFQ</a>
	<b>Part#:</b> <a href="#">S-1335M1J-M5T1U3</a> <b>Description:</b> IC REG LIN 1.85V 150MA SOT23-5	<b>Manufacturers:</b> <a href="#">SII Semiconductor Corporation</a> <b>In Stock:</b> 192085	<a href="#">RFQ</a>
	<b>Part#:</b> <a href="#">S-1335M35-M5T1U3</a> <b>Description:</b> IC REG LINEAR 3.5V 150MA SOT23-5	<b>Manufacturers:</b> <a href="#">SII Semiconductor Corporation</a> <b>In Stock:</b> 194110	<a href="#">RFQ</a>
	<b>Part#:</b> <a href="#">S-1335M26-M5T1U3</a> <b>Description:</b> IC REG LINEAR 2.6V 150MA SOT23-5	<b>Manufacturers:</b> <a href="#">SII Semiconductor Corporation</a> <b>In Stock:</b> 202369	<a href="#">RFQ</a>
	<b>Part#:</b> <a href="#">S-1335M33-M5T1U3</a> <b>Description:</b> IC REG LINEAR 3.3V 150MA SOT23-5	<b>Manufacturers:</b> <a href="#">SII Semiconductor Corporation</a> <b>In Stock:</b> 210895	<a href="#">RFQ</a>
	<b>Part#:</b> <a href="#">S-133L-5</a> <b>Description:</b> HEADCOVERW/INTEGRATED HEAD 1=1PC	<b>Manufacturers:</b> <a href="#">3M</a> <b>In Stock:</b> 3816	<a href="#">RFQ</a>
	<b>Part#:</b> <a href="#">S-1335M29-M5T1U3</a> <b>Description:</b> IC REG LINEAR 2.9V 150MA SOT23-5	<b>Manufacturers:</b> <a href="#">SII Semiconductor Corporation</a> <b>In Stock:</b> 169777	<a href="#">RFQ</a>
	<b>Part#:</b> <a href="#">S-1335M20-M5T1U3</a> <b>Description:</b> IC REG LINEAR 2V 150MA SOT23-5	<b>Manufacturers:</b> <a href="#">SII Semiconductor Corporation</a> <b>In Stock:</b> 172992	<a href="#">RFQ</a>
	<b>Part#:</b> <a href="#">S-1335M34-M5T1U3</a> <b>Description:</b> IC REG LINEAR 3.4V 150MA SOT23-5	<b>Manufacturers:</b> <a href="#">SII Semiconductor Corporation</a> <b>In Stock:</b> 183220	<a href="#">RFQ</a>
	<b>Part#:</b> <a href="#">S-1335M27-M5T1U3</a> <b>Description:</b> IC REG LINEAR 2.7V 150MA SOT23-5	<b>Manufacturers:</b> <a href="#">SII Semiconductor Corporation</a> <b>In Stock:</b> 168509	<a href="#">RFQ</a>
	<b>Part#:</b> <a href="#">S-1335M32-M5T1U3</a> <b>Description:</b> IC REG LINEAR 3.2V 150MA SOT23-5	<b>Manufacturers:</b> <a href="#">SII Semiconductor Corporation</a> <b>In Stock:</b> 192607	<a href="#">RFQ</a>
	<b>Part#:</b> <a href="#">S-1335M36-M5T1U3</a> <b>Description:</b> IC REG LINEAR 3.6V 150MA SOT23-5	<b>Manufacturers:</b> <a href="#">SII Semiconductor Corporation</a> <b>In Stock:</b> 166050	<a href="#">RFQ</a>
	<b>Part#:</b> <a href="#">S-1335M2J-M5T1U3</a> <b>Description:</b> IC REG LIN 2.85V 150MA SOT23-5	<b>Manufacturers:</b> <a href="#">SII Semiconductor Corporation</a> <b>In Stock:</b> 175140	<a href="#">RFQ</a>
	<b>Part#:</b> <a href="#">S-1335M25-M5T1U3</a> <b>Description:</b> IC REG LINEAR 2.5V 150MA SOT23-5	<b>Manufacturers:</b> <a href="#">SII Semiconductor Corporation</a> <b>In Stock:</b> 194452	<a href="#">RFQ</a>
	<b>Part#:</b> <a href="#">S-1335M21-M5T1U3</a> <b>Description:</b> IC REG LINEAR 2.1V 150MA SOT23-5	<b>Manufacturers:</b> <a href="#">SII Semiconductor Corporation</a> <b>In Stock:</b> 205916	<a href="#">RFQ</a>
	<b>Part#:</b> <a href="#">S-1335M22-M5T1U3</a> <b>Description:</b> IC REG LINEAR 2.2V 150MA SOT23-5	<b>Manufacturers:</b> <a href="#">SII Semiconductor Corporation</a> <b>In Stock:</b> 197774	<a href="#">RFQ</a>
	<b>Part#:</b> <a href="#">S-1335M24-M5T1U3</a> <b>Description:</b> IC REG LINEAR 2.4V 150MA SOT23-5	<b>Manufacturers:</b> <a href="#">SII Semiconductor Corporation</a> <b>In Stock:</b> 178081	<a href="#">RFQ</a>
	<b>Part#:</b> <a href="#">S-1335M1C-M5T1U3</a> <b>Description:</b> IC REG LINEAR 150MA SOT23-5	<b>Manufacturers:</b> <a href="#">SII Semiconductor Corporation</a> <b>In Stock:</b> 183278	<a href="#">RFQ</a>

### Related keywords for S-1335M28-M5T1U3

SII Semiconductor Corporation S-1335M28-M5T1U3	S-1335M28-M5T1U3 distributor	S-1335M28-M5T1U3 supplier	S-1335M28-M5T1U3 price
S-1335M28-M5T1U3 download datasheet	S-1335M28-M5T1U3 datasheet	S-1335M28-M5T1U3 stock	buy S-1335M28-M5T1U3

